

Windows Auto Logon

by PresentationPoint

1. Introduction	3
2. System Requirements	3
3. Windows Auto Logon	3
4. Set Auto Logon	4
5. Disable Auto Logon	5

1. Introduction

Use our free PresentationPoint Windows Auto Logon(/blog/windows-auto-logon-utility/) tool to let your computer log on automatically after a boot or reboot of your system. You will not have to manually log on to the computer. That is a great added value when you are using our software for digital signage or information screens.

2. System Requirements

.NET Framework 4.5. Read full specifications here(<https://docs.microsoft.com/en-us/dotnet/framework/get-started/system-requirements>)

Supported Client Operating Systems:

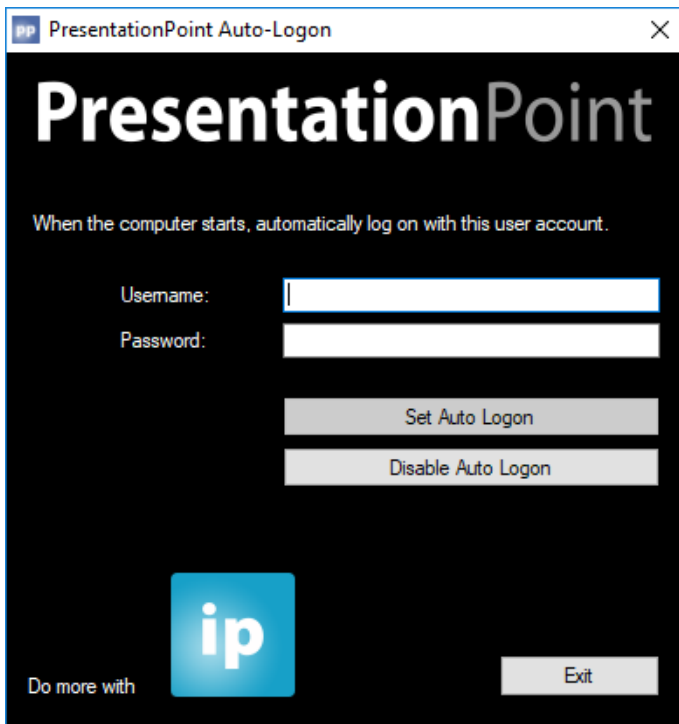
- Windows Vista SP2
- Windows 7 SP1
- Windows 8
- Windows 8.1
- Windows 10

Supported Server Operating Systems:

- Windows Server 2008 SP2
- Windows Server 2008 R2 SP1
- Windows Server 2012
- Windows Server 2012 R2
- Windows Server 2016
- Windows Server, version 1709

3. Windows Auto Logon

Run the PresentationPoint Windows Auto-Logon.

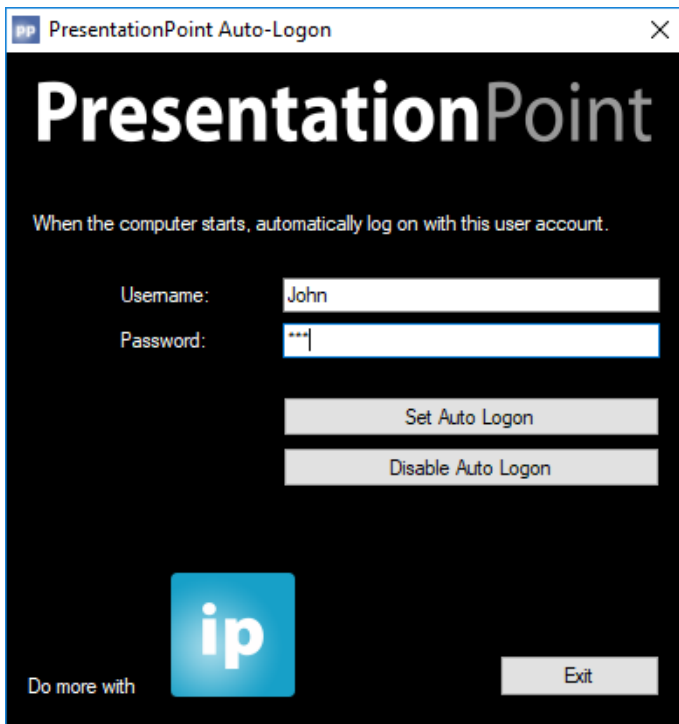


To let your computer log on automatically after a boot or reboot, simply enter the username and password as you would use it to log on manually.

This small tool will store this information on your computer. Note that this option is not safe for critical documents and access. This tool is ideal for computers and screens that are just displaying information or digital signage. Use with care!

4. Set Auto Logon

If you want your computer to log on automatically after a boot or reboot, then just enter the username and password and hit the Set Auto Logon button.



5. Disable Auto Logon

If you don't want to make use of the Windows Auto Logon anymore, then just hit the Disable Auto Logon button and you are done.

